

# Troubleshooting Guide

---

## Cannot Connect to Remote PC HKEY\_LOCAL\_MACHINE

© Copyright 2001-2009 EMCO Software

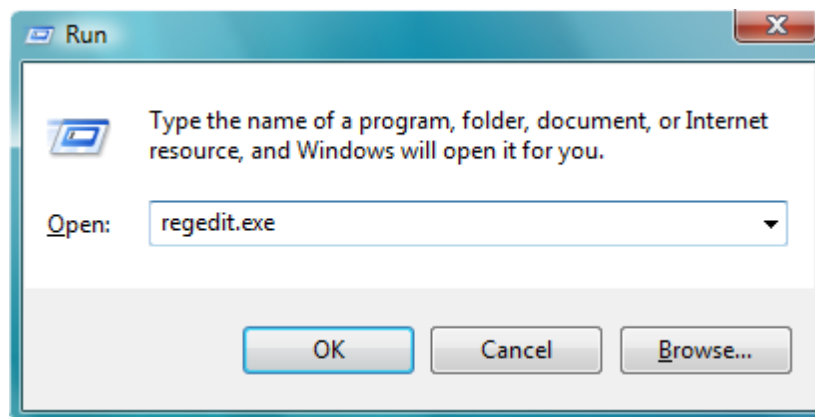
## Cannot Connect to Remote PC HKEY\_LOCAL\_MACHINE

 Make sure Remote Registry Service is started on remote pc.

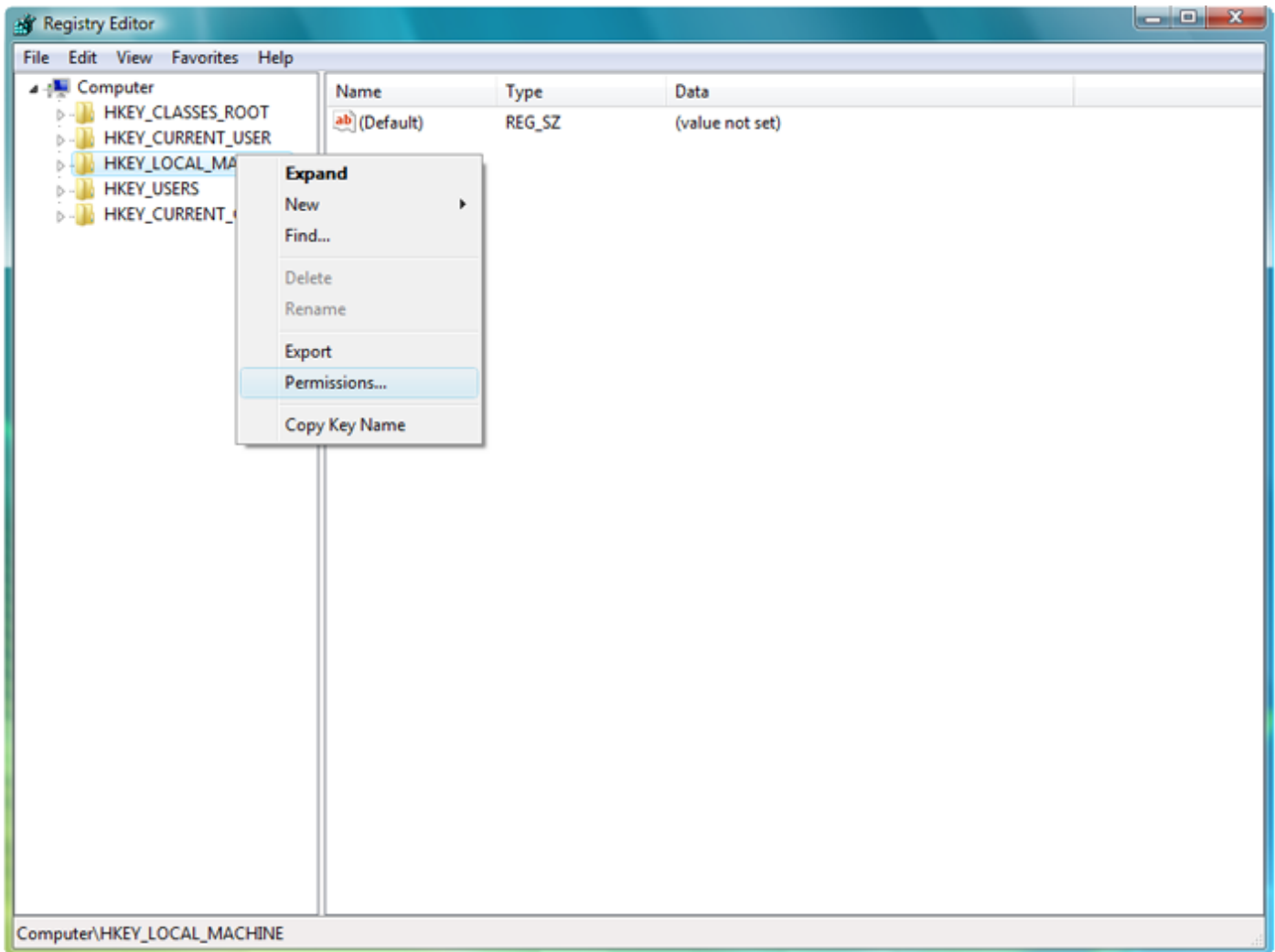
### To resolve this you can try the following

#### Way I

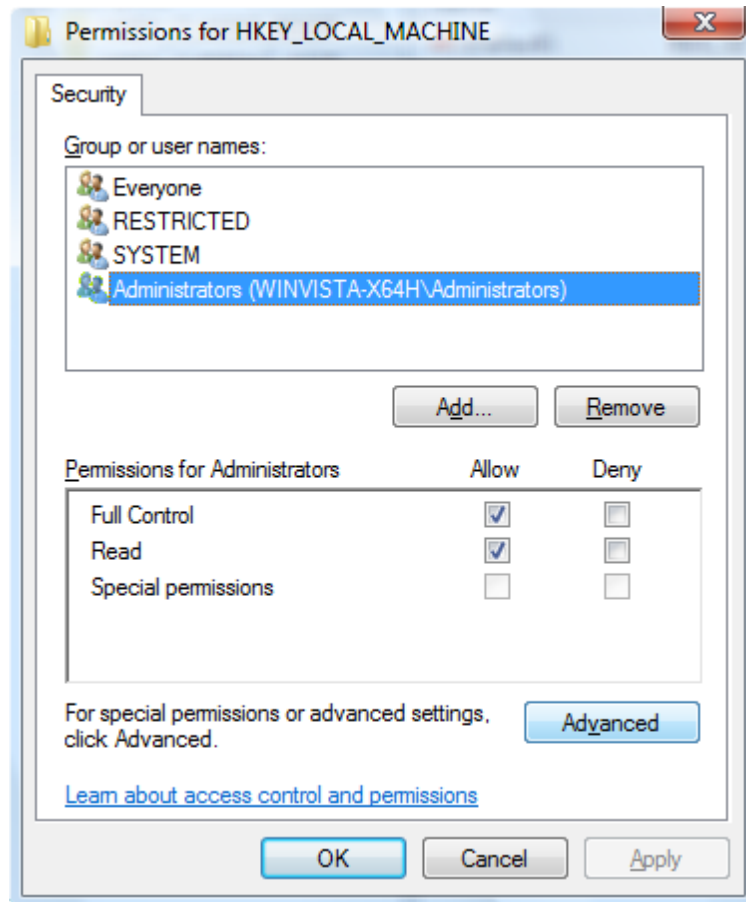
1. Go to the remote pc that isn't responding to HKLM registry key connection.
2. Start **regedit.exe**



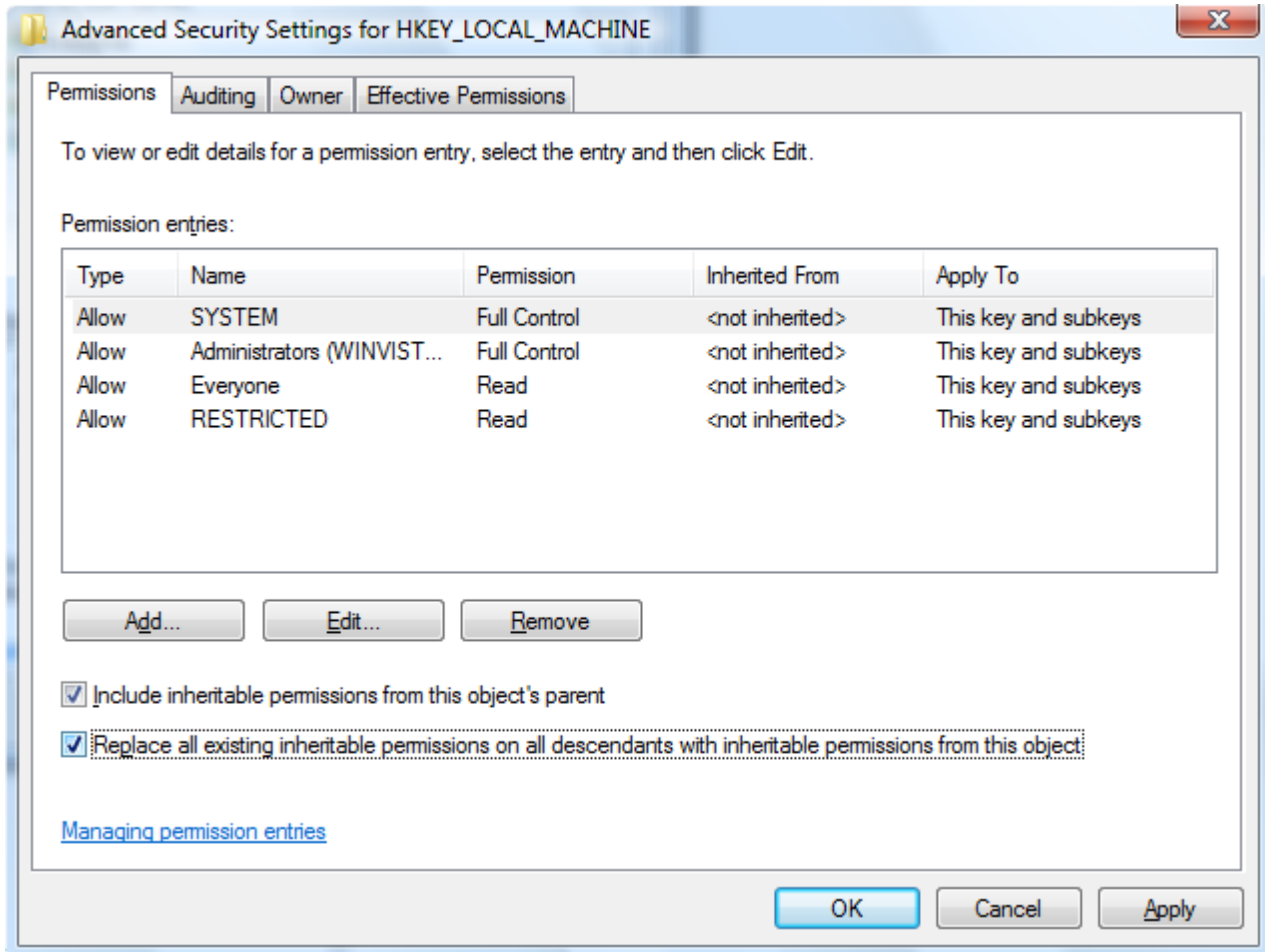
3. Locate the HKEY\_LOCAL\_MACHINE registry key, right click and select "Permissions"



4. Add the user you want to give permissions to HKEY\_LOCAL\_MACHINE registry key and then click "Advanced" button.



5. Next click "Replace permissions... checkbox and click OK.



The user you added should now be able to connect to remote pc HKLM registry key.

You can also use **regedt32.exe** application to edit these settings.

 Make sure Remote Registry Service is started on remote pc.

## Way II

1. Go to remote pc that isn't responding connection to HKLM registry key.
2. Start **regedit.exe**

Give LOCAL SERVICE permissions to this key.

HKEY\_LOCAL\_MACHINE\SYSTEM\CurrentControlSet\Control\SecurePipeServers\Winreg

 Make sure Remote Registry Service is started on remote pc.